

# Poughkeepsie-Dutchess County Transportation Council

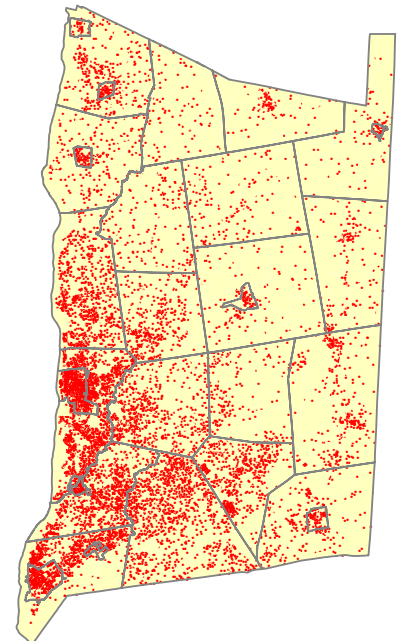
Transportation Newsletter: January - March 2011

## Moving Dutchess Update

The Council is moving forward with the new long-range, Metropolitan Transportation Plan (MTP) for Dutchess County. Titled *Moving Dutchess*, the Plan will identify policies and projects to prepare the transportation system to meet our mobility needs through 2040. The Plan is organized around **five planning areas**, which are based on blocks of four or more communities with similar land use, demographic, and transportation characteristics. This approach allows the Council to better understand local transportation issues and identify solutions tailored to each community. The Plan will include a chapter for each planning area that describes its demographics, activity centers, and transportation facilities (e.g. roads, bridges, and transit); each chapter will also include a summary of transportation issues identified in local comprehensive plans and previous Council studies. The Plan will then identify and prioritize specific transportation needs for each planning area, identifying what projects can be progressed with future funding. As always, the Council is interested in hearing from you about what transportation issues you face and possible solutions.

Please let us know what transportation issues your community is facing by submitting a comment via our [Public Comment Form](#).

*Moving Dutchess* relies on available demographic data to understand future population and employment trends. Knowing how and where population will change plays an important role in determining the direction of future transportation investments, such as where transit service should be expanded or what road facility should be improved. The Council has long used data from the decennial Census to assess recent trends. According to the 2010 Census, Dutchess County's 2010 population totaled 297,488, which was 6.2 percent higher than reported in 2000 (280,153): an average increase of over 1,700 people per year during the past decade. The 2010 Census also showed that the Town of Poughkeepsie, with a population of 42,399, was still the most populated municipality in Dutchess, followed by the City of Poughkeepsie with a population at 32,736. Together, these two municipalities accounted for more than a quarter of the county's total population. The Plan will provide greater detail on these and other trends to satisfy the Council's mission of providing the resources necessary to build and maintain a transportation system that promotes the safe and efficient movement of people and goods in a sustainable manner.



The 2010 Census showed that the county's population (represented in red) is most concentrated in its cities, villages, hamlets, and the southwestern block of communities.

## Traffic Count Program Gets Underway

The Council is preparing for its annual Traffic Count Program. Each year, the Council collects traffic volume, speed, and vehicle type data at 300 locations across the county. Each location is counted approximately every three years, with counts taken over a 3-5 day period between April and November. The counts focus on local (non-state) federal-aid eligible roads and are used to assess transportation needs, assist with road planning and design, and prioritize project funding. Municipalities have already been sent a list of the planned count locations in their jurisdiction and will be notified a second time two weeks prior to the actual count. So, the next time you see black rubber tubes across the road, you'll know why they're there!

Traffic volume data from 1997-2010 is available on a searchable database on the Council's website. The database can be searched by road name, route number, year, or municipality. Data can also be exported into an Excel spreadsheet or Acrobat report. Go to [www.dutchessny.gov/pdctc.htm](http://www.dutchessny.gov/pdctc.htm) and click on "Transportation Data & Resources" and then "Traffic Counts."



*Poughkeepsie-Dutchess County Transportation Council*

27 High Street (2nd Floor)  
Poughkeepsie, NY 12601

Phone: 845.486.3600  
Fax: 845.486.3610  
E-mail: [pdctc@co.dutchess.ny.us](mailto:pdctc@co.dutchess.ny.us)  
Website: [www.dutchessny.gov/pdctc.htm](http://www.dutchessny.gov/pdctc.htm)

## Our Organization

Established in 1982, the **Poughkeepsie - Dutchess County Transportation Council** serves as the designated Metropolitan Planning Organization (MPO) for Dutchess County. Federal regulations require that all Urbanized Areas (U.S. Census defined metropolitan areas with over 50,000 people) be represented by a MPO, which is responsible for ensuring that Federal transportation dollars are committed through a locally driven, comprehensive planning process.

## Voting Members

William Steinhaus	County Executive
Jeffrey Burns	Town of Clinton
Chris Colsey	Town of Wappinger
Wayne Euvrard	Town of Amenia
Daniel French	Town of Beekman
Steve Gold	City of Beacon
John Hickman, Jr.	Town of East Fishkill
Thomas Martino	Town of Hyde Park
Joan McDonald	NYS DOT
James Miccio	Village of Fishkill
Patricia Myers	Town of Poughkeepsie
Joan Pagonis	Town of Fishkill
John Tkazyik	City of Poughkeepsie
Jon Wagner	Town of LaGrange
Jay Walder	MTA

## Upcoming Meetings

**Apr 27 (10 a.m.):** Technical Committee  
**May 9 (6 p.m.):** CR 93 CMP Public Mtg  
**May 25 (10 a.m.):** Technical Committee

*The preparation of this document has been financed in part through grant[s] from the Federal Highway Administration and Federal Transit Administration, U.S. Department of Transportation, under the State Planning and Research Program, Section 505 [or Metropolitan Planning Program, Section 104(f)] of Title 23, U.S. Code. The contents of this document do not necessarily reflect the official views or policy of the U.S. Department of Transportation.*

## CR 93 Corridor Plan Workshop

The Council will present recommended land use and transportation strategies from the Draft CR 93 (Myers Corners Road/Middlebush Road) Corridor Management Plan to the Town of Wappinger Board at a workshop on May 9, 2011 at 6:00 pm at Wappinger Town Hall.

The objective of the plan is to identify and recommend policies and projects to improve vehicular and non-vehicular travel along CR 93. The study area covers the entire length of CR 93 between NYS Routes 9D and 376.

The workshop will include a presentation of the Draft Plan to the Board for their review and will also include opportunities for the public to give feedback. For project materials and more information, see <http://www.townofwappinger.us/CR93/index.html>.

## 2011-2012 Unified Planning Work Program

The Council adopted the [2011-2012 UPWP](#) on March 16, 2011. This document includes descriptions of federally funded planning tasks, schedules, costs, fund sources, and identifies which organization will perform each task for the period April 1, 2011 to March 31, 2012 (the State Fiscal Year). The UPWP includes a variety of planning activities that address on-going and emerging issues related to maintaining and improving the region's transportation system and overall quality of life. Funds used to support UPWP tasks come from Federal Highway Administration (FHWA) and Federal Transit Administration (FTA), with Dutchess County and the New York State Department of Transportation (NYSDOT) providing matching funds. Over \$743,000 in federal planning funds are programmed for the 2011-2012 program.

The [2011-2012 UPWP](#) will continue a number of planning programs from the [2011-2012 UPWP](#), to include completing the CR 93 (Myers Corners Road/Middlebush Road) Corridor Management Plan (CMP), analyzing data from the Mid-Hudson Valley Transportation Management Area (TMA) Travel Time Survey, annual traffic count program, travel demand model update, and county pavement condition monitoring program.

## Wappingers Falls Strategy Adopted

The Village of Wappingers Falls adopted the *Downtown and Waterfront Revitalization Strategy* on March 9, 2011. The Village had requested Council and Dutchess County Planning Department staff to assist with plans to integrate the Route 9 corridor with the Village center. The adopted Strategy includes concept plans for a Route 9 Secondary Street System, an East Main Street Gateway at Route 9, and a Village Center Gateway at the East Main Street/South Avenue (Route 9D) intersection. The full document and concept plans are available online at <http://wappingerslwrp.wordpress.com/>.

Would you like to receive this newsletter via email rather than standard mail? If so, send an email to [pdctc@co.dutchess.ny.us](mailto:pdctc@co.dutchess.ny.us) with Newsletter Subscription in the subject line.